



KLS Geological Tours presents An Ore Deposits Tour to: Turkey



June 09 (Thu) to June 25 (Sat), 2011

Geology Guide:

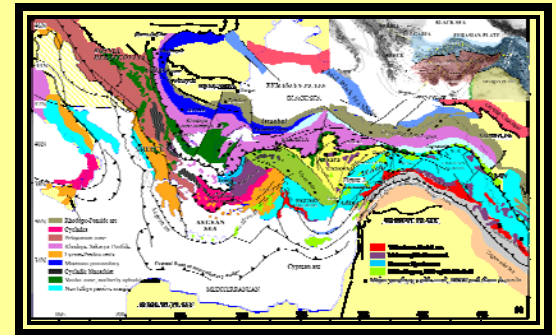
Dr. Ilkay Kuscü, Geology Professor, Muğla University Muğla, TURKEY



Turkey is host to several major metallogenic zones due to the development of a Tethyan magmatic arc along the length of the country. Although Turkey is rich in mineral resources, mining activity only accounts for ~1.5% of the GDP. This is largely due to control over the mining industry by the government; however in recent years, limitations on exploration by foreign companies have been relaxed, which makes Turkey an increasingly attractive area for mineral exploration & development. This trip will provide an opportunity to see several deposits typical of the Tethyan arcs in an area that has only recently become recognized internationally as a major metallogenic belt.

GEOLOGICAL OVERVIEW:

Most of Turkey is part of the Alpine Mountain Belt that extends from the Atlantic Ocean through to the Himalayan Mountains. This belt formed through the Tertiary Period as the Arabian, African & Indian continental plates began to collide with the Eurasian Plate; these processes are still at work today as the African Plate converges with the Eurasian Plate & the Anatolian Plate escapes towards the west & southwest along strike-slip faults.



The Biga Peninsula in western Turkey is known to be one of the most prospective belts for porphyry & epithermal style Cu-Au mineralization along this mountain belt. Mineralization is related to extensional tectonics & magmatism along the Neo-Tethyan metallogenic belt in western Anatolia, Turkey: a major zone of magmatic arc-related mineralization that extends across central & southeast Europe, Turkey, Iran, Pakistan, through the Himalayan region into Burma, Malaysia, Indonesia & Papua New Guinea. It contains a wealth of large ore deposits.

TRIP HIGHLIGHTS AND OUTCOMES:

- Dr. Kuscü is a well renowned economic geologist in Turkey; studied at the Department of Geological Engineering at Middle East Technical University (Ankara, Turkey); completed a research associateship with the Mineral Deposit Research Unit (MDRU) at The University of British Columbia in 2005-7; & he also guided this same tour in 2009
- ½ Day **Geology of Western Turkey** shortcourse by Dr. Kuscü
- Full trip escorted by Dr. Kuscü, who also speaks fluent English as well as Turkish
- Full trip also escorted by Ms. Karie Smith, who has extensive ore deposit tour experience since 2005, has been the CFO of MDRU since 1999 & who successfully organized & executed this same tour with Ilkay in 2009

Participants will gain:

- Knowledge of the regional geology, tectonics, magmatism, & metallogenic belts in the western Anatolia region of Turkey
- Understanding of the geological framework & genesis of magmatic arc-related deposits such as Cu-Au porphyry systems, low-sulfidation epithermal Au systems, Fe & Fe-Cu mineralization & the world's richest borate district
- A review and an overlook of various exploration techniques and tools for finding mineralization in western Anatolia, including geochemical analysis, ground geophysical surveys, & drilling operations
- An understanding of mineralization in oxide, leached & supergene enrichment zones, open pit mining, & heap leach gold extraction processes

ECONOMIC GEOLOGY MINE AND DEPOSIT TOURS:

Halilaga Cu-Au porphyry Deposit:

The only site in Turkey where porphyry (0.3 to 0.5 g/t Au, 0.3 to 0.5 % Cu), skarn, & high sulfidation epithermal systems are seen together as possibly part of one mineralizing event.



Ayazmant Fe-skarn Mine:

Like Samli but the mineralization is hosted within an andesite porphyry (endoskarn). Reserves ~ 5.5 Mt ore, at a grade of 0.8% Cu, 65% Iron, recovery of 65%



Sahinli* Low Sulfidation epithermal Au system Deposit:

A must-see low sulfidation epithermal Au system with various vein textures



Ovacik Epithermal Mine:

Gold-bearing epithermal quartz brecciated veins hosted by subaerial andesite porphyries



Balya Pb-Zn Mine:

Mined since ancient times & most likely was the location where the lead & silver for the ancient city of Troy was collected



Kisladag Au porphyry Mine:

The largest gold mine in Turkey, ~157km², ore reserve of 5.523 Moz Au. Tour of Au ore cyanide heap leach facility



Samli IOCG Mine:

Intermediate mafic dyke & contains iron-oxide minerals in addition to minor copper bearing sulphide phases



Kirka Borate Mine: Plus Kula Volcanoes

State-owned Kirka mine is the largest borate deposit in the world. Kula Volcanoes walking tour.



CULTURAL, HISTORICAL AND GENERAL GEOLOGY TOURS:

Istanbul

One of largest cities in world, only city on 2 continents. Sultan Ahmet, Hagia Sophia, Basilica Cistern, Grand Bazaar, Bosphorous Tour



Bodrum Sailboat Tour + an Ancient 7 wonder

Ancient style sailboat coastal tour, showing andesitic lava flows & ignimbrite units. Mausoleum of Halicarnassus



Acropolis of Pergamum + Sardes

Containing the 2nd best Library in the Greek civilization. Sardes ancient Lydian Kingdom, 1st to invent the gold coin



Muğla University visit

A tour of the lab facilities and the campus.



Ephesus

Best well-kept Roman ruins. At its prime in the 100 BC, it had a pop. of 250,000, making it the 2nd largest city in the world at the time



Pamukkale + Ancient city of Hierapolis + thermal pool

Terraces of calcium carbonate. Cleopatra swam in this thermal pool with temp of about 38C



PRICES (both price options include):

* not confirmed and may be replaced with Koru Pb-Zn deposit

- Small group size of maximum 19 participants
- Geology guidebook with pre-selected relevant papers, trip final report plus a DVD of trip photos
- Dr. Ilkay Kuscu & Ms. Karie Smith's guidance & assistance for the duration of the trip
- ½ Day Geology of Western Turkey shortcourse
- 3, 4, or 5-star accommodation as double-occupancy with in-room wireless internet as available; gentleman & ladies will have separate rooms; All breakfasts plus 3 Group dinners
- All transportation in newer, comfortable, & air-conditioned 9 or 12-seater vans
- Ferry tour on the Bosphorous plus Entrance fees to Acropolis of Pergamum, Pamukkale & Ephesus
- 1-day private sailing boat excursion in Bodrum; plus 1 Turkish Hamam (bath) experience....

1. **Flight** (roundtrip Vancouver to Istanbul) **included** option (17 days with travel, Jun 9-25) : **\$5000 CAD**

2. **Flight NOT included** option (to/from Istanbul on your own, 14.5 days, Day 2 to Day 16, Jun 10-24): **\$3800 CAD**

3. **Economic Deposit tour days only** option (8 days, Day 4 to Day 11, Jun 12 - 19): **\$3000 CAD**

(see website for daily itinerary)

Payments accepted by cheque, wire and bank transfers, and all major credit cards

FOR MORE INFORMATION OR TO REGISTER:

Please contact Karie Smith at karie@klsgeotours.com or check out www.klsgeotours.com for more information.

SPACE IS LIMITED!

REGISTER EARLY!

KLS GEOLOGICAL ORE DEPOSITS TOUR June 2011 – Turkey

June 09 (Thu) to June 25 (Sat), 2011**

REGISTRATION FORM

- Space is available on a first come, first served basis; Payment must be received with each registration
- Payment may be received in Canadian or U.S. dollars, all credit cards will be charged in CAD
- A service charge of \$100.00 (in the currency of the fee) will be levied on cancelled registration and/or cheques returned for insufficient funds
- Cancellations: If a replacement cannot be found, 65% is non-refundable. **No** refunds within (1) month of the trip.

**Please fax this form to +1-604-536-8635 OR email it to karie@klsgeotours.com OR mail it to:
#319 – 15216 North Bluff Road, White Rock, BC, V4B 0A7, Phone: +1-604-367-8898**

Price includes: Lodging, transportation, many meals, geology guide and organizer attendance, geology guidebook, 1/2 day geology shortcourse, final report, trip photos on DVD, 1-day private sailboat excursion, Turkish bath experience, several sight-seeing entrance fees; PLUS airfare & Cdn/US visa if applicable. 17 days (see brochure for more info)				
(1) Airfare roundtrip Vancouver to Istanbul - 17 days, June 9 to 25, 2011	Deposit	Due Upon receipt	\$3000 CAD (or USD equiv*)	
	Final pymnt	Due by Apr.15, 2011	\$2000 CAD (or USD equiv*)	
			Total \$5000 w/ airfare	
(2) No airfare (Istanbul on your own)-14.25 days June 10 to 24, 2011	Deposit	Due Upon receipt	\$1800 CAD (or USD equiv*)	
	Final pymnt	Due by Apr.15, 2011	\$2000 CAD (or USD equiv*)	
			Total \$3800 w/o airfare	
(3) Economic Deposits only – 8 days June 12 to 19, 2011	Deposit	Due Upon receipt	\$1000 CAD (or USD equiv*)	
	Final pymnt	Due by Apr.15, 2011	\$2000 CAD (or USD equiv*)	
			Total \$3000 deposits only	

*Please convert to USD by dividing the CAD amount by the USD "Selling" rate at www.vancity.com/Rates/

Method of Payment: Last day to register is May 9, 2011

I would like to pay by:

Cheque info: Make payable to "KLS Geological Tours", and mail to the above address

Wire payment info: Contact for details.

PayPal Credit Card info: An extra 3% fee will be added when paying by credit card.

Card Number: _____ Expiry Date: ____/____ (MM/YY)

CSC (3 or 4 digits on back or front of card): _____

Name on Card: _____ Signature: _____

PayPal Bank Transfer: Contact Karie by email or phone for details

.....

Name (*please print*): _____ Job Title: _____

Company: _____

Mailing Address: _____
_____ Postal Code: _____

Telephone: _____ Email: _____

Who to contact in an emergency (name / phone #) _____ / _____ / _____
(City, Province, Country) _____, _____, _____

Any known allergies / medical conditions (yes__no__) if yes, please specify:

(For airfare purposes as well as company mine tours):

Exact name (as on passport): _____

Passport # / Country of issue: _____ / _____

.....

****Note:** exact days (+/- 1-2 days) to change slightly if necessary. Final trip itinerary and dates will be set no less than 1 month in advance of the trip.